



BRCA MLPA Report

Sample ID: MG [REDACTED]

Procedure Performed: Genomic DNA was prepared and subjected to BRCA1 and BRCA2 Multiplex Ligation-dependent Probe Amplification. The amplicons were subjected to fragment analysis using capillary electrophoresis. Peak height of the electrophoretic trace was compared to control samples. Deletion regions are reflected as peaks with approximately ½ height or complete absence. The results must be interpreted by a trained professional with sufficient knowledge in related fields of studies.

For Research Use Only. This test was developed and its performance characteristics determined by myGenomics, LLC in Alpharetta, GA. It has not been cleared or approved by the U.S. Food and Drug Administration (FDA). The FDA has determined that such clearance or approval is not necessary. The data contained within this report is not intended for use in diagnosis of disease or other conditions, including a determination of the state of health, in order to cure, mitigate, treat, or prevent disease or its sequelae. False positives may be included in this report due to intentional use of loose filtering algorithm criteria. This report is intended to aid the end user in discovering disease-causing mutations.

Summary of Results

The filtered list of deletions detected are listed in the Table of Sample Deletions on page 2 of this report in addition to the trace images.

No (1) deletion was detected in BRCA1.

No (1) deletion was detected in BRCA2.

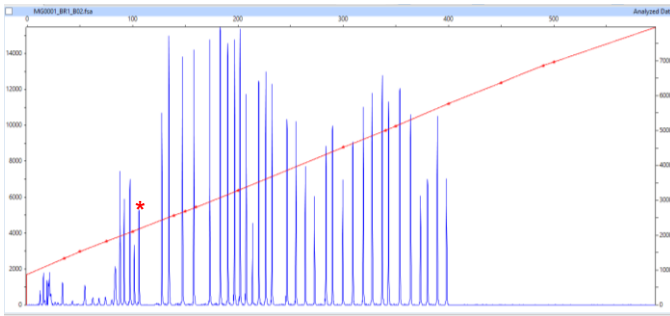
It is important to note that MLPA may not detect all possible deletions of the gene.



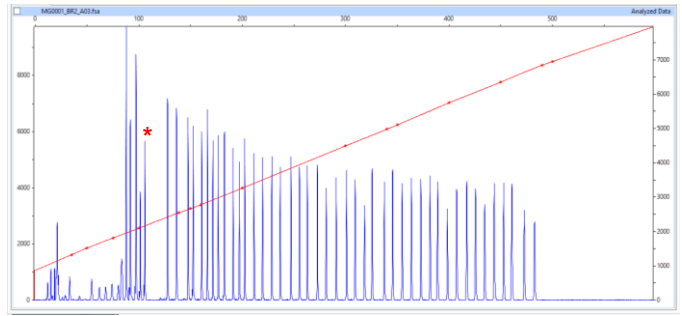
Table of Sample Deletions

No deletions detected.

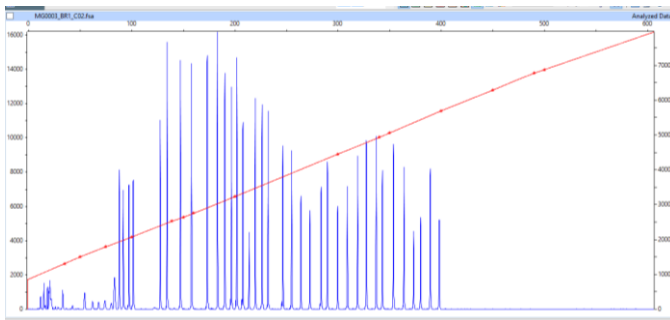
Male control, *=Y specific amplicon
BRCA1



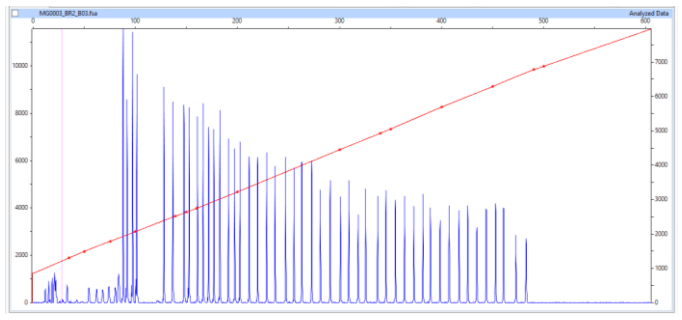
BRCA2



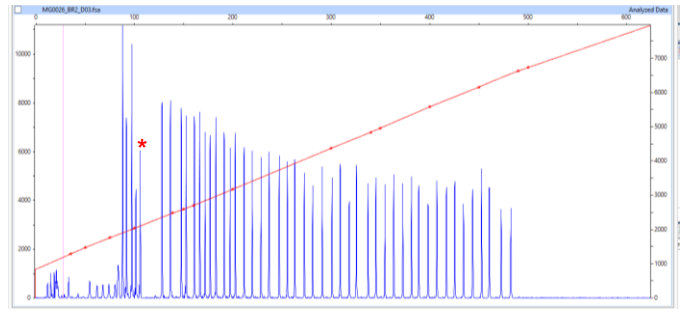
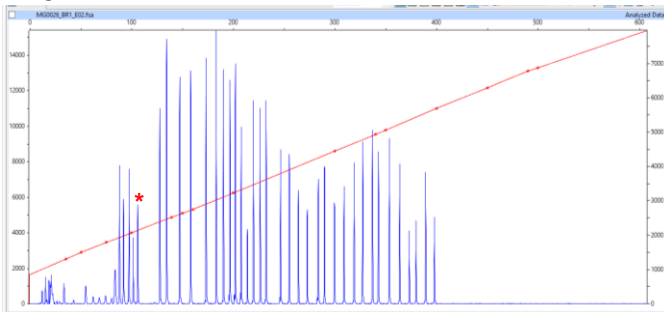
Female control
BRCA1



BRCA2



MG00 (male)
BRCA1



Report Prepared By: NJM
Date: 28 July 2014

Approved By: SA